

Bead BONUS



Time to complete project: a weekend

Dimensions: 6-in. Bracelet;

1½-in. wide Earrings

Intermediate project

Glossary: PT=pass through;

PBT=pass back through

Tips:

- To protect your pieces against crystal fraying, double your thread where needed and/or use FireLine®.
- Slight tension is important while sewing these pieces; too much tension will cause your netting to buckle and lose flexibility.

Materials*:

Bracelet Base

- **20 grams** size 11/0 Czech seed beads—pearl white
- **2 grams** size 15/0 Seed beads—pearl white
- **250 CRYSTALLIZED™—Swarovski Elements** 3mm Bicone Crystals—Crystal AB
- FireLine®, 6-lb. test

Bracelet Fringe

- **CRYSTALLIZED™—Swarovski Elements:**

10 6mm Marguerites—Crystal Transmission

10 3mm Crystal Pearls—White Pearl

5 3mm Bicone Crystals—Crystal AB

- **4** Czech glass bells or 10mm beads
- **5–10** Small Lucite flowers in varying sizes
- **3** 28mm Lucite flowers—clear matte
- **10** Lucite leaves—green
- **6–10** Czech mini daggers—chalk white
- **5 grams** size 11/0 Czech seed beads
- **2 grams** size 8/0 Czech seed beads
- **2 grams** Japanese drops—pearl white and clear AB
- **2 grams each** size 15/0 seed beads—pearl white and chalk white

Bracelet Vines

- **2 grams each** size 15/0 Seed beads—pearl white and sage green silver-lined
- **2 grams** size #1 Bugle beads—chartreuse

Earrings

- **2** 28mm Lucite flowers—clear matte
- **3 grams** size 15/0 Seed beads—sage green silver-lined
- **2 grams** size #1 Bugle beads—chartreuse
- **54 CRYSTALLIZED™—Swarovski Elements** 3mm Bicone Crystals—Crystal AB
- **2** 6mm Split rings—sterling silver
- **2** Post earrings—sterling silver
- FireLine®, 6-lb. test

Blossoming Bride Bracelet and Earrings

By the Design Staff at *The Hole Bead Shoppe*

These pieces are the *perfect companions* to the *Blossoming Bride* Necklace.

www.beaduniquemag.com

Additional Supplies:

- Basic beading supplies, chain nose pliers, erasable marker, glue, size 12 beading needles

*All materials available through *The Hole Bead Shoppe* (www.theholebeadshop.com).

For product information, see *Sources of Supply* below.

Instructions: Bracelet Base

(Note: All “seeds” are size 11/0 pearl white seed beads and all “Crystals” are 3mm Bicone Crystals unless otherwise noted. Refer to **Fig. 1** as you build the bracelet base.)

1. Condition 6 yds. of thread. Put a stop bead 5 in. from the thread’s end. Pick up one Crystal and three seeds. Repeat seven more times, ending with a Crystal and one size 15/0 seed; skip the size 15/0 seed and PBT the Crystal.

2. Add three size 11/0 seeds, one Crystal, three seeds, and then PT Crystal #7. Repeat this sequence, passing through Crystal #5, then Crystal #3, and then Crystal #1. (Note: Tie the working thread to the starting thread before passing through Crystal #3.) Remove the stop bead and tie the working thread to the starting thread. Dab the knot with glue. Do not cut tail.

3. Add three seeds, one Crystal, and one size 15/0 seed. Skip the size 15/0 seed and PBT the Crystal. Add three size 11/0 seeds, one Crystal, three size 11/0 seeds, and PT Crystal #13. Repeat this sequence, passing through Crystal #12, then Crystal #11, and then Crystal #10.

4. Repeat Steps 2 and 3 for the entire length of bracelet. (The bracelet shown has 24 rows.)

Clasp

1. Sew into your work and exit one end of your netting three Crystals from the edge. Exit the top of the Crystal. Pick up 84 size 11/0 seed beads. Sew into the same Crystal (three Crystals from the edge) on the opposite side of netting. Sew into your work and tie off. Run the thread back into the newly created loop, and tie off before the 10th seed. Exit between the 14th and 15th seed.

2. Pick up at least twenty size 15/0 seed beads. Wrap the twenty seeds around the loop and enter the end of the size 15/0 seed. PBT the size 15/0 seed to complete a full circle, and then enter between the 14th and 15th size 11/0 seed on the opposite side you exited. Exit the bottom of the 14th bead. Continue tying off in your work. Repeat the step for three full wraps. On the last pass, dab all knots with glue.

3. Sew into your work on the opposite side of the bracelet, tying off as you go.

Exit row 6 in the center of the bracelet. Add a Czech glass bell using the fringe technique. Add embellishment around the bell as in Step 1 under *Embellishing the bracelet* (Before securing the bead clasp, make sure the beaded loop fits.)

Creating Vines and Spray

1. *Vine*. Condition 2 yds. of thread. Put stop bead 5 in. from the thread’s end. Pick up four beading needle lengths of size 15/0 pearl white or sage green silver-lined seed beads. Using even-count flat peyote, add another row of beads. When the row is complete, sew into your stop bead and tie the working thread to the starting thread. Cut your working thread, and then dab with glue. Create several vines for your pieces: two longer and two shorter.

2. *Spray*. Condition 2 yds. of thread. Put stop bead 5 in. from the thread’s end. Pick up one size 15/0 seed and one bugle bead. Repeat five times. At the end of the

thread, skip the last seed bead and PBT the bugle. Exit the top of the bugle bead and pick up one bugle, one size 15/0 seed, one bugle, and one size 15/0 seed. Skip the last seed and PBT the entire row of beads just added. Sew into the original row of bugles and seed beads and exit at another joint. Vary amounts and exiting points to create a realistic spray. When your spray is complete, remove the stop bead and tie the working thread to your starting thread. Cut your working thread to the same length as your starting thread (should be about 5 in.). Dab with glue.

Embellishing the Bracelet

1. Lay your work on a flat surface. Place larger trimmings on top of your work to gauge final placement. Gently lift the trimmings and mark the beads lying beneath with a bright erasable marker. Remove the trimmings.

2. *Fringe*. Sew into your work, tying off as you go. Pick up four size 15/0 seeds and one size 11/0 seed. Skip the last seed, PBT the size 15/0 seed, and sew into the base of your piece. Exit a few beads further into the row, and then repeat step. Vary your bead combination; refer to the materials list for suggested beads. (Note that the larger seed beads should be added last—**Fig. 2**). Repeat until your work is covered with the desired amount of fringe.

3. *Flowers*. Sew into your work near a previous mark and pick up one Lucite flower, one Crystal, and one size 15/0 seed bead. Skip the seed, PBT the remain-

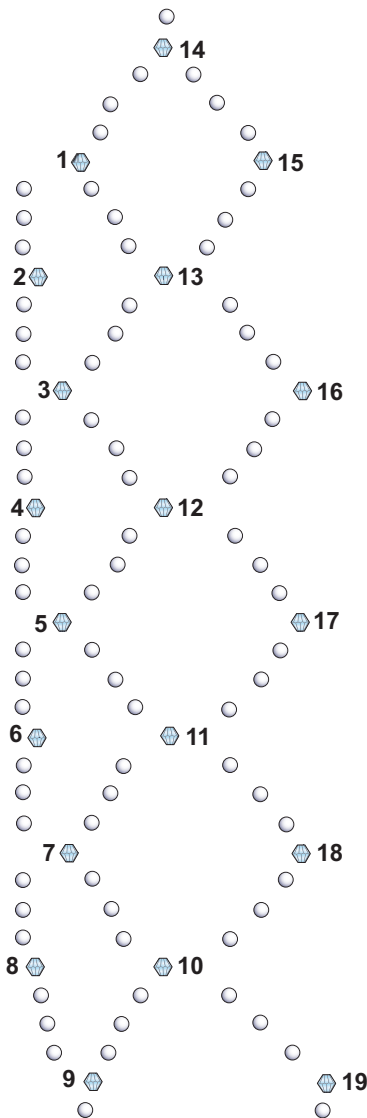


Fig. 1

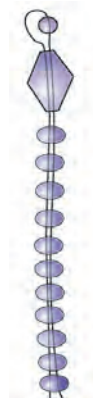


Fig. 2

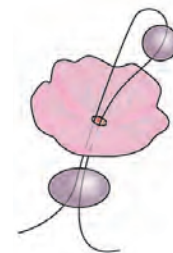


Fig. 3

ing beads, and then sew into your work (**Fig. 3**). (*Note: As you continue adding flowers, keep in mind that the smallest bead should be added last.*) Retrace your thread path several times for security.

4. Leaves. Sew into your work. Pick up two size 15/0 seeds, one Lucite leaf, two size 15/0 seeds, and then sew back into your work. Add as many leaves as desired.

5. Vines. Lay the piece onto a flat surface in a relaxed position. Place your vine so it weaves through your work in a realistic manner. (Keep in mind that this is a functional, wearable piece and gravity will affect your placement.) Sew into your work, tying off as you go. Sew up between two beads, pick up a size 15/0 seed from your vine, and then sew back between the same two beads you exited. Continue weaving through your work until the entire vine is tacked down. Tie off as needed to preserve the flexibility of your netting.

6. Spray. Place one tail thread on one side of a Lucite flower and the other tail thread on the opposite side of the flower. Tie several tight overhand knots under the flower where the bottom of the Lucite meets the netting. Dab with glue, allow to dry, and then cut thread. If you're adding spray where there are no flowers, tie the spray to your netting in an inconspicuous place. Dab with glue, and then cut thread.

Earrings

1. Referring to *Creating Vines and Spray*, create two sprays (one for each earring), leaving a 5-in. tail on each unit.

2. For a vine, begin with 3 yds. of thread and pick up three beading needle lengths of size 15/0 seeds. Add another row of seeds with even-count peyote. Once you create the peyote vine, sew the two ends into a circle and tie off; do not cut thread. Weave into the first opening between two seeds. Pick up one size 15/0 seed, one 3mm Crystal, and one size 15/0 seed. Skip the opening where the bead should go and enter the next available space. Repeat until the peyote circle is covered with 3mm Crystals. Tie off and dab with glue. Leave a 5-in. tail. Create a second vine. Set one vine and one spray aside.

3. Weave into the vine and exit the center of one side of the circle. Pick up a 28mm Lucite flower, a 3mm Crystal, and a size 15/0 seed. Skip the seed and sew back down into the Crystal and flower. Enter the opposite side of the peyote vine circle. Weave into the vine with your thread, securing the flower. Sew back into the flower, Crystal, and seed bead, skip the seed, and then PBT your Crystal and flower. Enter the opposite side of the peyote vine. Repeat step until you cannot get your needle into the flower any longer. Tie off, dab with glue, let dry, and then cut thread.

4. Tie both ends of the 5-in. tail from the spray between the Lucite flower and peyote vine. Tie several surgeons' knots. Dab with glue. Using the remaining thread from the spray, tie a 6mm split ring to the center of the peyote vine. Dab the knots with glue, and then cut excess thread. Attach a post earring to the 6mm

split ring.

5. Repeat Steps 3 and 4 to create the second earring.

If you have questions concerning this project, contact the editors of *Bead Unique Magazine*.

Email: editors@beaduniquemag.com

Website: www.beaduniquemag.com



Kelli Burns and Tarlee Yeoman are sisters who not only share a love of beading, but also share a business

together. They have 11 years of combined beading experience and are self-taught. They share teaching duties at their bead store, The Hole Bead Shoppe, and when they are not teaching or helping clients, they are making custom designed jewelry for eBay or publications. Visit their website at www.theholebeadshop.com.

Sources of Supply

Berkeley®

www.berkeley-fishing.com

CRYSTALLIZED™—Swarovski Elements

www.create-your-style.com

The Hole Bead Shoppe

(918) 338-2444

www.theholebeadshop.com